



Whitehall Primary School

Newsletter

February 2023



Dear Parents and Carers,

Our Year 3 classes provided us with some high quality entertainment this week with their fantastic Shakespeare plays. Audiences were taken on a journey through the history and tragedy of Shakespeare's life and times, along with a good dose of comedy. Well done to all the children and staff in Year 3. You each played your part.

Staff have revisited our home learning policy. We haven't made any significant changes but we are aware that some families want to help support and enrich the learning we do in school. Alongside recommendations about reading and maths practice, teachers have come up with a range of suggested activities linked to the class topics and areas of learning that children can work through at home. These won't be compulsory tasks, but we would love to hear how children get on with any challenges they choose to do.

Finally, I am sure you are as saddened as I am by the news from Turkey and Syria this week. The scenes of devastation are heartbreaking. We know children and families have been following updates and wanting to find ways to help. We have talked about the issues sensitively with children and helped them find ways to process the news. Next term, we will work with children to come up with some fundraising ideas and send donations to help people suffering in the aftermath of the earthquakes. In the meantime, below is a link to the Disasters Emergency Committee who are coordinating an appeal.

<https://www.dec.org.uk>

I hope you all have safe and restful half term breaks. We look forward to welcoming you back to Whitehall on Tuesday 21st February.

Best wishes,

Tom Burton



Friends of Whitehall would like to thank everyone who put their tokens in the Tesco Community Grant containers. We're now waiting to hear how much we'll receive as a result.

On Friday 24th February at pick up time, we'll be holding a second hand uniform sale so keep an eye out for that. We'll also start planning events for the summer term soon so if you have ideas, or even better, if you can help, please get in touch at friendsofwhitehallbristol@gmail.com



The governing board has welcomed Jolene, our caretaker as the new staff governor to the team and we are in the process of a parent governor election, organised by school.

We are looking forward to our new governors joining us !

We hope everyone enjoys a break over half term.



We are delighted to let you know that Whitehall Primary have been successful in achieving the **GOLD** Bristol Eating Better Award, having achieved 48 of a possible 50 actions; an amazing result!

This award shows our commendable dedication to ensuring there are healthier options on the menu as well as considering our environmental impact.

A massive WELL DONE to everyone involved.

Thank you.



Awarded to

Whitehall Primary School

Johnson Lane, Whitehall
Bristol, BS5 9AT

Achieving 48 out of 50 possible Bristol Eating Better Schools Award actions, designed to help schools meet the School Food Standards, increase the availability of healthy food and promote sustainability.

Date

3rd February 2023



Public Health

Bristol Eating Better is a Bristol City Council Initiative



WBC—Whitehall Breakfast Club

This provision is currently **FULL**

Please remember that we do not offer a drop off service, if your child has not got a pre-booked space they will not be able to attend.

WASPS —Whitehall After School Play Scheme



This provision is currently **FULL**

Please can we remind families to log on to their

SchoolMoney/Teachers2parents accounts and make sure that they are up-to-date with payments.

We have an extensive waiting list for this provision and those families who are in arrears face their space being withdrawn and given to another family. We thank you for your co-operation and understanding.

Punctuality

The school gates open at 8.40am to allow children to arrive promptly and make a good start to the school day. All children are expected to be in by 8.45am to begin their learning. Class registers close at 8.55am. Please can you make sure your child has arrived at school by this time. The school gates remain open until 9am to allow any parents and cares on site time to leave before they are locked for the day. Children arriving after 8.55am will need to go through the main office.



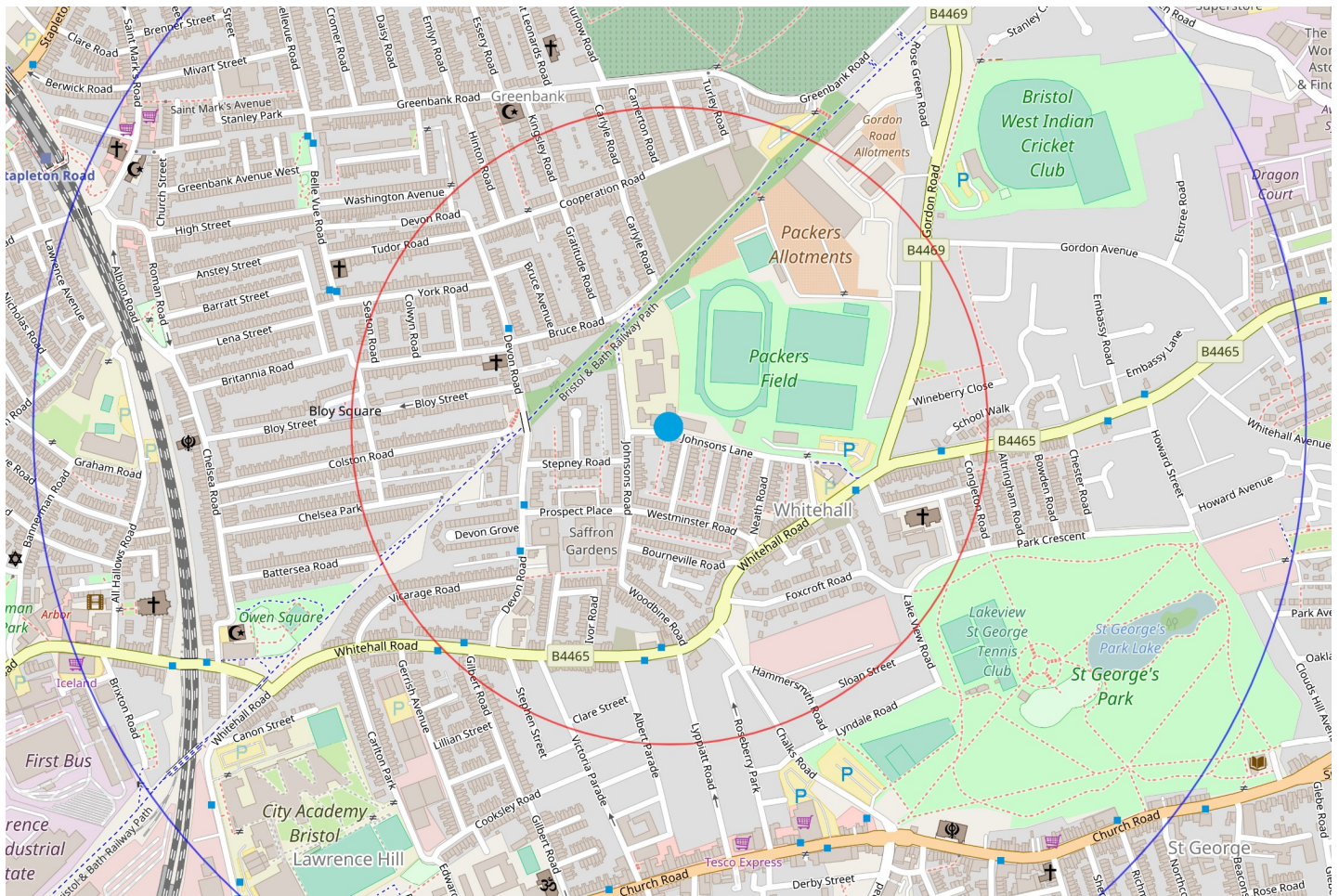
Dear Parents/Carers

Please can you ensure that if you have to leave something at the school office for child that it is **CLEARLY** labelled with their name and class details.

Thank you!



As an active travel school, we are always keen to find ways to support our community to walk, bike, or scoot to school. We have created a handy map that shows you all the streets nearby that are within a 5 or 10 minute walk. If you currently drive within this zone, why not walk, bike or scoot instead?



Travel to Whitehall Primary School



Whitehall Primary School
Johnsons Lane
Whitehall
Bristol
BS5 9AT

travelwest+

For more information please visit:
www.travelwest.info/schools

Designed by Pindar Creative
www.pindarcreative.co.uk

Why Active Travel?

Choosing to walk, scoot or cycle are all easy ways to increase daily physical activity and help maintain a healthy weight. Children who travel actively to school also gain valuable life skills such as road safety and, as they get older, learn to travel independently. Choosing active modes of travel can help to boost concentration and improve mood. It can also help to reduce the risk of developing health problems such as type 2 diabetes, asthma and even mental health disorders. Active travel is also very cost effective with walking being absolutely free and scooting and cycling much cheaper than using a car. Don't forget Active Travel is also good for the environment, helping to cut traffic congestion and pollution.

Try active travel today!



Modeshift STARS Plan

Modeshift STARS is a national award scheme that recognises schools who demonstrate excellence in supporting walking, cycling and other forms of sustainable travel. Ask your school if they are taking part and for more information visit:

www.modeshiftstars.org



How To Use This Map...

Your school and Local Council have worked together to create this map for you to use when planning your journey to/from school to encourage more active travel. The map focuses on your school in the middle with icons to show some useful features such as cycle parking and crossing points. The map also shows five and ten minute walking and cycling zones that are shown as circles on your map. Use the map to find your home and work out if you are living within one of the 5 or 10 minute walk and cycle zone circles.

If your home is inside one of the walk or cycle zones... It means that you live very close to the school and that active travel could be a great option for you. If you're not already, why don't you try walking, scooting or cycling to school? Parents, if you need the car to travel to work, it may be quicker and easier to leave it parked at home while you do the school run.

If you live outside of the walk and cycle zones... In order to reduce congestion at the school gate we would like those who currently arrive by car to try parking outside of the zones and walking or scooting the rest of the way to school. Next time you drive, try to park and stride from suitable places outside the walking zone and walk or scoot the rest of the way to school. You may even find it takes you less time than trying to find somewhere to park near the school gates.

Choosing to travel actively and leave the car at home can improve safety and air quality around the school site and allows the opportunity for some exercise at the start and end of the school day. We thank you for supporting our walking and cycling zones.

Get in contact

Contact your Local Authority Sustainable Travel Officer or Road Safety Team to find out what training and support they offer.

Bath & North East Somerset Council: alasdair_yule@bathnes.gov.uk
Bristol City Council: aimee-claire.eyermann@bristol.gov.uk
South Gloucestershire Council: roadsafetyeducation@southglos.gov.uk

What is Active Travel?

Active Travel is any form of travel that involves getting some exercise on your journey. Walking, cycling, scooting and Park & Stride are all excellent forms of active travel.

Walking is a brilliant way to get to school. You get plenty of fresh air and time to talk to your family. You can arrange to meet up with other families and walk with your friends.

Scooting can be a fun way to practise your balance and steering as well as letting off steam before the school day ahead.

Cycling is a great mode of travel that can give children freedom and independence to get around.

Park & Stride is where parents/carers park a short distance from school and walk the rest of the way.

This is ideal for those who live too far away from school to walk or who need to continue their journey to work.



FEBRUARY HALF TERM AT FELIX ROAD 13 TO 19 FEBRUARY 2023

MONDAY
12 TO 5.30PM
OPEN ACCESS

TUESDAY
12 TO 5.30PM
OPEN ACCESS

WEDNESDAY
12 TO 5.30PM
OPEN ACCESS

6 TO 7.30PM
FELIX NIGHTS

THURSDAY
12 TO 5.30PM
OPEN ACCESS

FRIDAY
3.30 TO 5.30PM
FELIX GIRLS

SATURDAY
CLOSED

SUNDAY
1 TO 5PM
OPEN ACCESS

OPEN ACCESS for
children aged 8 -
14 years olds, free
to come and play.

Younger children
are also welcome
if supervised by
an adult.

FELIX NIGHTS
for children 11 - 14
year olds only.

FELIX GIRLS for 8
- 14 year old girls
only.

**THIS FEBRUARY HALF TERM WE'LL BE SERVING UP FUN,
PLAY AND FOOD.**

Free play, child led activities including; arts and crafts,
building and cycling activities



JUNIOR BAKE OFF

...IS LOOKING FOR THE UK'S
BEST YOUNG BAKERS
AGED 9 - 12

WWW.APPLYFORJUNIORBAKEOFF.CO.UK

We are looking for young budding bakers between **9-12 years old**.
Filming would take place from July 2023, but our **applications close on Sunday 12th March 2023**.
Interested bakers can apply online at - www.applyforjuniorbakeoff.co.uk

Enquiries:

applyforjuniorbakeoff@loveproductions.co.uk



JAMES AND THE GIANT PEACH

JAMES AND THE GIANT PEACH – A PLAY IN 3 DAYS February 14 @ 10:00 am - February 16 @ 4:00 pm £120

JAMES AND THE GIANT PEACH – A PLAY IN 3 DAYS

For ages 7-10 years *

Dates: Tuesday 14th to Thursday 16th February 2022

Times: 10am to 4.00pm (performance at 4.00pm on Thursday)

Venue: St Werburghs Community Centre

Cost: £120 per child (sibling and early bird discounts available)

A play 3 days is a fun filled drama workshop offering children aged 7-10 years the opportunity to devise, rehearse and perform a play under the guidance of Bristol Academy of Drama's experienced Drama Facilitators.

Throughout the week, the group will create their own version of the story inspired by Roald Dahl's delightful tale of friendship and loyalty '*James and the Giant Peach*'. They will develop characters, learn stagecraft skills, devise scenes to build their play for a performance on the final afternoon for family and friends to enjoy. This process is designed to develop creative thinking, drama and improvisation skills and build confidence and teamwork.

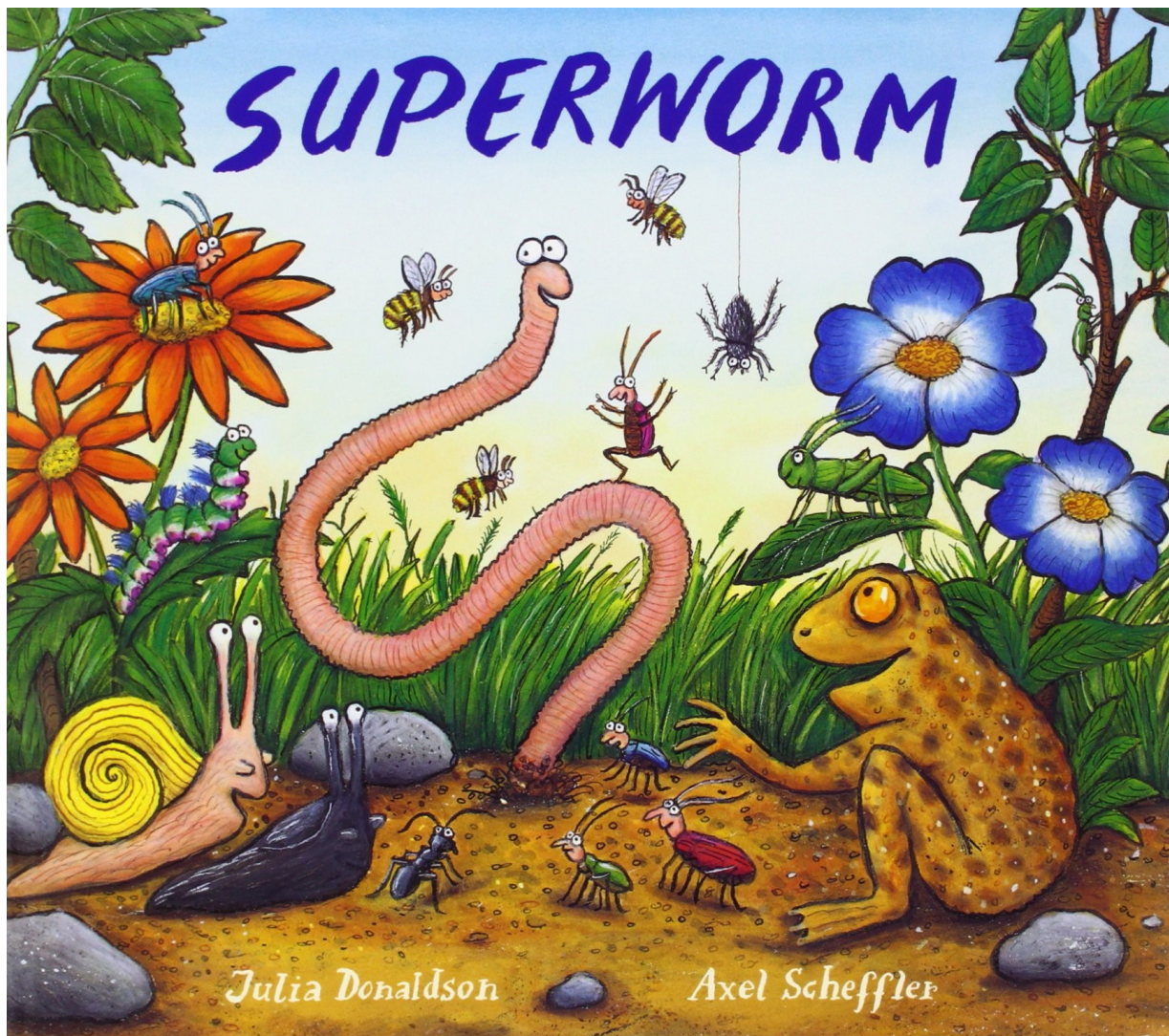
Students can let their imagination run wild as they not only create their version of James and the Giant Peach through ensemble work. How will we build a giant peach, who will they find living inside and will they escape the clutches of the wicked Aunts Spiker and Sponge? So much to explore in this wonderful tale and there is no limit to what can be achieved; who knows what strange and wonderful dreams and characters that can be created and what worlds their audiences will be transported to.

Not only will they receive guidance and help from the Facilitators but they will be given props and costumes to help create the world of their play.

It will be days of building fun memories, learning new skills and making new friends.

Due to limited spaces available, it is recommended that parents/guardians book early to avoid disappointment. Early bird and sibling discount available, simply email us at events@stwerburghs.org.uk for discount codes and booking information. All children will need to bring is their willingness to get stuck in, their imagination, comfy clothing and plenty of food and drink to keep their energy levels up.

*this session is ideally for students in Year 3 to Year 5 but if your son/daughter has already turned 7 but is in Year 2, we would only recommend this workshop if they are confident.



Super Worm

Creating Theatre with Little Performers @ St Werburghs Community Centre
February 16 @ 9:30 am - February 17 @ 1:00 pm £69

We are delighted to be offering, in conjunction with Bristol Academy of Drama, infant school children the opportunity to take an exciting and creative journey into the world of drama and performance by exploring and then sharing a short performance piece based on the wonderfully fun and exciting story of *Super Worm* by Julia Donaldson

The workshop offers younger children the opportunity to develop the building blocks of drama and performance. Throughout the 2 days the group will introduce the children to performance by using drama games, characterisation exercises, storytelling skills and chorus work. It will also help build teamwork and the children will make new friends, build confidence and creative thinking skills. But more than that is designed for the children to have a really fun few days and introduce them to the world of theatre and performance.

Led by B.A.D's experienced drama facilitators, the children will build their new theatrical world by using costumes and props. They will not only perform in the play but, throughout the creative process, learn to share ideas and work with others to bring the story to life. Through speaking, listening and using imagination, children will build their understanding of how to dramatise a story and present a finished production for an audience of family and friends to enjoy (12.30pm on Friday).

So sign up now for 2 half days of building fun memories, learning new skills and making new friends.

Due to limited spaces available, it is recommended that parents/guardians book early to avoid disappointment. Early bird and sibling discount available, simply email us at events@stwerburghs.org.uk for discount codes and any further information. All children will need to bring is their willingness to get stuck in, their imagination, comfy clothing and plenty of food and drink to keep their energy levels up.

* We would recommend this workshop for children who are already at school so for children in Reception to year 2. Children who are 4 years old but yet to be in school must be confident and would need to be left with our facilitators, parents would be unable to remain with them in the session.

BUY TICKETS <https://www.tickettailor.com/events/stwerburghscommunityassociation/819731>